

# Mobile Fire Apparatus Inspection Form

**Agency**

Deerfield Valley Volunteer Fire  
Department

**Truck Designation**

Tanker 21

Monday, December 05, 2022

**VIN #:** 2NKMHZ8X33M394616

**Manufacture, Chassis** Kenworth

**Manufacture, Truck** New Lexington

**Truck Model**

**Odometer** 9417.7

**Engine Hour** 665

**Manufacture, Pump** Hale

**Pump Model** AP50-23

**Pump Serial** 03A0207

**Generator Model**

**Generator Serial**

# Chassis Engine

## Engine Lubrication

	Inspected	Notes
Oil Level	Satisfactory	drain magnet clean, small amount of sludge. 21 qts
Oil Leakage	Satisfactory	
Oil Filter	Corrected/Service	1748XD Napa Filter

## Engine Cooling

	Inspected	Notes
Coolant Level	Satisfactory	
Coolant PH/additive	Satisfactory	8.0 PH, >60 glycol, 1200 additive. Good.
Coolant Filter	Corrected/Service	Changed. See notes at end of section
Coolant Hose Condition	Satisfactory	
Cooling system Pressure Test	No	
Radiator Cap	Satisfactory	
Radiator Clean	Satisfactory	
Fan & Clutch	Satisfactory	
Fan Shroud	Satisfactory	
Thermostat	Satisfactory	
Heat Exchanger Hoses	Satisfactory	

## Other Fluids

	Inspected	Notes
Fuel Leakage	Satisfactory	
Fuel Filter(s)	Corrected/Service	Changed
Power Steering Fluid	Satisfactory	
Power Steering Leakage	Satisfactory	
Windshield Washer Fluid	Satisfactory	

## Intake

	Inspected	Notes
Air Filter	Satisfactory	
Tubes & Hoses	Satisfactory	
Inter-cooler	Satisfactory	
Ember Separator	Satisfactory	
Intake restriction gauge	Satisfactory	

## Exhaust

	Inspected	Notes
Exhaust Leakage	Satisfactory	
Security of Mounting	Satisfactory	
Deformation	Satisfactory	
Muffler	Satisfactory	
DEF Level	No	
DEF Leakage	No	
DEF Test	No	

## Mechanical

	Inspected	Notes
Belts Condition	Satisfactory	
Belt Tensioner	Satisfactory	
Alternator Mounting	Satisfactory	
Engine Mounting	Satisfactory	

## Chassis Engine File Upload:

[0a7446a0.Document.185159](#)

## Chassis Engine Comment:

Coolant system holds 7.5 gallon. the coolant filter on the engine was for 31-40 gallon systems, meaning it had too much additive in it.  
Last oil change around March 2021, Mileage 8738.

## Chassis Electrical:

---

### Low-Voltage

	Inspected	Notes
Shoreline Charge Voltage	Satisfactory	13.9V
Charging System Voltage	Satisfactory	14.0 v
Battery Terminals	Satisfactory	
Electrolyte Level	No	
Battery(s) Conductivity Test	Satisfactory	see picture for results
Starter Voltage Drop	Not Satisfactory	Negative side 0.4V, Positive 1.3V. Supposed to be 0.3 V or lesss
Alternator Voltage Drop	Satisfactory	<0.1V
Alternator Output Test	Satisfactory	
Alternator Regulator Test	Satisfactory	

### DOT Equipment

	Inspected	Notes
Headlights High/Low	Satisfactory	
Parking & Clearance	Satisfactory	
Tail & Stop Lights	Satisfactory	
Turn Signal / Hazard	Satisfactory	
Backup Lights	Satisfactory	
Backup Alarm	Satisfactory	
License Plate Lamp	Satisfactory	
Automotive Horn	Satisfactory	

### Warning / Scene Lightning

	Inspected	Notes
Cab Interior Lights	Satisfactory	
Dash/Gauge Lights	Satisfactory	
Compartment lights	Satisfactory	
Do Not Move' Cab warning light	No	
Warning Lights	Satisfactory	
Forward White Warning Cut-Off Interlock	Satisfactory	
Hose Bed Lights	Satisfactory	
Ground Lights	Satisfactory	
Electronic Siren	Satisfactory	

<b>Mechanical Siren (Bearings / Mounting)</b>	Satisfactory	
---	--------------	--

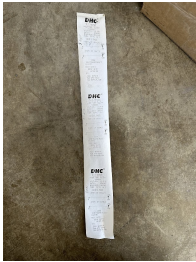
### Line Voltage Source

	Inspected	Notes
<b>Voltage</b>	No	
<b>Frequency</b>	No	
<b>Controls</b>	No	

### Appliances

	Inspected	Notes
<b>Cord Reels Voltage Drop</b>	No	
<b>Receptacles Voltage Drop</b>	No	
<b>Scene Lights</b>	Satisfactory	
<b>Circuit Breaker Box</b>	No	
<b>GFCI Receptacles</b>	No	
<b>Light Tower</b>	No	

### Line Voltage File Upload:



## Chassis and Components

---

### Transmission

	Inspected	Notes
<b>Fluid Level</b>	Satisfactory	
<b>Fluid Leakage</b>	Satisfactory	
<b>Transmission mounting</b>	Satisfactory	

### Driveshaft

	Inspected	Notes
<b>U-joints/yokes</b>	Satisfactory	
<b>Carrier bearings</b>	Satisfactory	
<b>Differential oil</b>	Satisfactory	

### Rear Axle

	Inspected	Notes
Axle Flange leaks	Satisfactory	
Rear Spring condition	Satisfactory	
Frame Rails/crosses	Satisfactory	

### Front Axle

	Inspected	Notes
Springs Condition	Satisfactory	
Shocks	Satisfactory	
Wheel bearing Lube	Satisfactory	
King pin grease	Corrected/Service	Greased

### Brakes

	Inspected	Notes
Brake condition (thickness)	Satisfactory	
Brake Adjustment	Not Satisfactory	See notes at end of section
Air Brake valves and tanks	Satisfactory	
Drain air tanks	Corrected/Service	Drained copious amounts of water from all tanks.
Brake pedal pivot pin	Corrected/Service	lubricated
Air Leak-down	Not Satisfactory	Leak from valve on front air tank
Air build-up	Satisfactory	
Parking Brake	Satisfactory	

### Steering

	Inspected	Notes
Tie Rods & Boots	Corrected/Service	Greased
Steering linkage	Corrected/Service	Greased
Steering box	Satisfactory	
Steer box fluid level	Satisfactory	
Fluid leakage(S)	Satisfactory	

### Chassis Components

	Inspected	Notes
On-Spot Chains	Not Satisfactory	Drivers side leaks a lot of air. they do function however.
Grease chassis	Corrected/Service	
Fuel Tank mounting	Satisfactory	
Fuel leakage(C)	Satisfactory	

Axles are numbered from front to rear

	Tread Depth	Pressure(PSI)	Date Code(WWY Y)	Concerns
1 / Right	>10/32"	110	4519	
2 / Left - Outer	>10/32"	105	4419	
2 / Right - Inner	>10/32"	90	4419	Low, topped off
3 / Left - Inner				
3 / Right - Outer				
1 / Left	>10/32"	110	4519	
2 / Left - Inner	>10/32"	112	4419	
2 / Right - Outer	>10/32"	110		
3 / Left - Outer				
3 / Right - Inner				

## Cab & Body

### Cab

	Inspected	Notes
Cab Latches	No	
Cab Tilt Hinges	No	
Tilt Fluid	No	
Door Hinges / Latches	Satisfactory	
Windshield (cracks)	Satisfactory	
Window Operation	Satisfactory	
Cab Seat Condition / Mounting	Satisfactory	
Seat Belts (Frays, Latch)	Satisfactory	
Seat Belt Occupancy Warnings	No	
Steering Wheel Condition / Play	Satisfactory	
Heater / Defroster	Satisfactory	
A/C	Satisfactory	
Wipers Condition	Satisfactory	
Wipers / Washer Operation	Satisfactory	
Switches (Sticky, Illumination, Cracks)	Satisfactory	

### Body

	Inspected	Notes
Compartment Door Latches	Satisfactory	
Compartment Door Hings / Springs	Satisfactory	

<b>Operator's Slide-Out Platform</b>	No	
<b>Steps (Cab, pump panel, hose bed)</b>	Satisfactory	

## Road and Operational Test

---

### Road Test

	<b>Inspected</b>	<b>Notes</b>
<b>Engine Oil Pressure</b>	Satisfactory	80-100 PSI at highway speed
<b>Engine Coolant Temperature</b>	Satisfactory	190
<b>Tachometer Operation</b>	Satisfactory	
<b>Speedometer Operation</b>	Satisfactory	
<b>Auto Trans Shift (Smooth)</b>	Satisfactory	
<b>Manual Trans Clutch</b>	No	
<b>Manual Trans Shift</b>	No	
<b>Brake Operation</b>	Not Satisfactory	see brake section notes
<b>Drive Line Vibration</b>	Satisfactory	
<b>Air Governor Cut-In / Cut-Out PSI</b>	Satisfactory	
<b>Steering Stability (Vibration / Shaking)</b>	Satisfactory	
<b>Front End Noises</b>	Satisfactory	
<b>Engine Fan Clutch</b>	Satisfactory	



# Pump and Water Tank

## Pump Maintenance

	Inspected	Notes
Pump Trans Oil	Corrected/Service	Changed
Pressure Control Device (Response Time)	Satisfactory	
Transfer Valve	No	
Intake Relief Valve	No	
Primer Operation	Corrected/Service	replaced the solenoid
Vacuum Test (Initial / 5 min. Drop)	Satisfactory	22 in. hg- 16 in. hg.
Pump Packing Drip Rate	No	
Mechanical Seal No Leakage	Satisfactory	
Valve Cap / Plug Gasket	Satisfactory	
Tank-To-Pump Check Valve	No	Done during pump performance testing
Auxiliary Engine Cooler	Satisfactory	
Auto-Lube Oil (Hale)	No	
Intake Screens	Satisfactory	
Anodes	No	
PTO Pump Driveline	Corrected/Service	found the pto going into the pump was loose. removed the set screw, applied loctite and put back on.

## Pump & Valve Controls

	Inspected	Notes
Pump Engaged / OK-To-Pump Lights	Satisfactory	
Throttle Interlocks	Satisfactory	
Auto Trans Lockup	Satisfactory	
Pump Shift Actuator	Satisfactory	
Pump Panel Engine Gauges	Satisfactory	
Pump Panel Illumination	Satisfactory	
Master / Compound Gauge Accuracy	Satisfactory	
Discharge Gauge Accuracy	Satisfactory	
All Gauges Display Condition	Satisfactory	
Water Level Gauge	Satisfactory	
Drain Valves	Satisfactory	
Auto-Drain Valves	No	
MIV Operation & Lube	No	
MIV Position Indicators	No	

<b>Valve Linkage / Locks</b>	Satisfactory	
------------------------------	--------------	--

### **Pump Accessories**

	<b>Inspected</b>	<b>Notes</b>
<b>Suction Strainer</b>	Satisfactory	
<b>Hard Sleeve &amp; Gaskets</b>	Satisfactory	
<b>Deck Gun Lubrication</b>	No	
<b>Booster Reel Lube</b>	Satisfactory	
<b>Primer Fluid</b>	No	

# Foam / CAFS System

---

## Foam Proportioner

	Inspected	Notes
Instrumentation, Gauges, Controls	No	
Strainer / Filter	No	
Pump Oil	No	
Check Valve	No	
Calibration check	No	
Flow Meter	No	

## CAFS

	Inspected	Notes
Hydraulic Drive System	No	
Hydraulic Fluid Level	No	
Compressor Oil	No	
Air Filter(C)	No	
Pressure Control Test	No	

# Form Conclusion

---

## Global Narrative

Mileage at last service: 8738


## Technicians

Trenton Hoover

Clayton Armstrong

Peter Fox

## Signature

A handwritten signature in cursive script that reads "Peter Fox". The signature is written in black ink and is positioned below the "Signature" section header.